

Welcome to..



Stalking the Divine Sophia

Understanding the true Nature of the Divine Feminine

MODULE 18

A scenic landscape featuring a calm lake in the foreground, a dense forest of evergreen and deciduous trees in the middle ground, and a range of mountains with patches of snow in the background under a clear blue sky. The water in the lake reflects the surrounding scenery.

SOPHIA

Overview – Part 2

Calling In Sacred Space



A scenic landscape featuring a calm lake in the foreground, reflecting the surrounding environment. The middle ground is filled with a dense forest of evergreen and deciduous trees, some of which have yellowed with autumn. In the background, majestic mountains with patches of snow rise against a clear blue sky. The overall atmosphere is peaceful and natural.

Connect to the Earth

Open to Receive

Check-in ~

*Have you felt the Divine
Feminine Moving in you?*



A Review of What we have Learned...

Continued



That Sophia is Divine Feminine Essence...

PURE UNADULTERATED LIFE FORCE
ENERGY...

FOUND IN EVERY LIVING THING
THAT UNSEEN, UNKNOWNABLE, YET
KNOWABLE FREQUENCY THAT LIVES
US...

THAT BREATHES US
THAT KNOWS US
THAT BIRTHED US

SHE'S EVERYWHERE AND NOWHERE
ALL AT ONCE
SHE IS THE FORCE THAT SOURCES
US.

*SHE IS WHAT SCIENCE CALLS THE
QUATUM FIELD.*



That Sophia is the mystical magical glue that holds everything together.

As such she also manifests as energy flows throughout every living thing. Her essence is so magical because it is the untouchable, the unknowable, the mysterious glue that forms it all through frequency alone.

There is a natural progression, a natural flow to life on this planet. **We are inextirpably bonded to this world and exchange energy with all of it.** Every living being has its own signature of this exchange. Every living structure in your body also has its own signature.

Sometimes, especially now, our flow can be disrupted. But simply reminding those structures of their natural flow can jump start the car and move them back into place.



We learned we could direct the flow of Sophia using Templates...

Caldron of Wisdom Light Infusion

- Can be used for:
 - Infusing specific desires and outcomes into any offering you are providing.
 - Getting wisdom and guidance on any situation you are in.



Other things to Color Balance

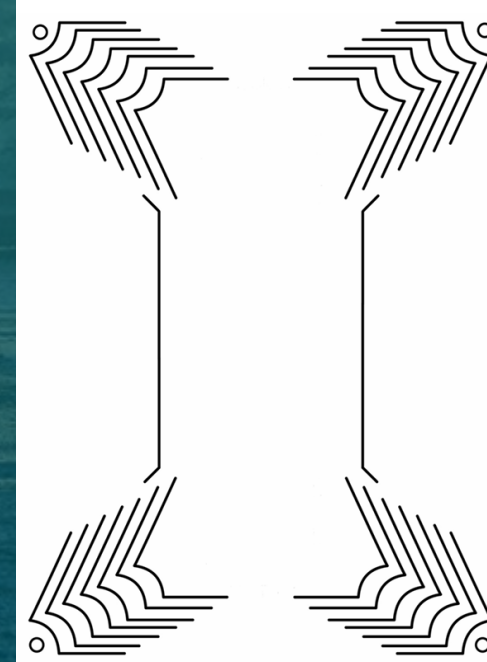
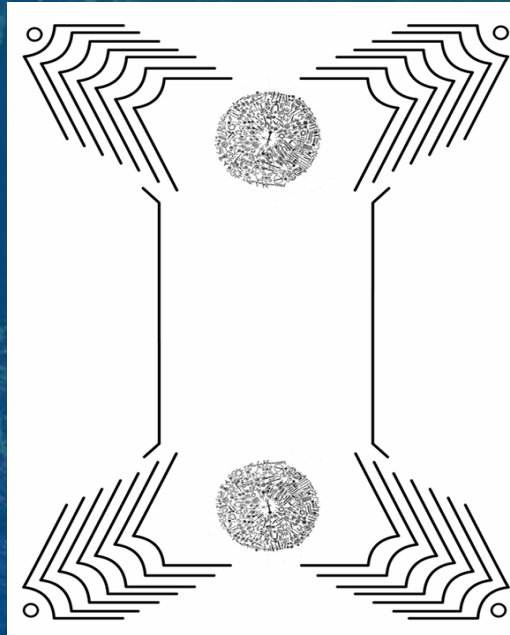
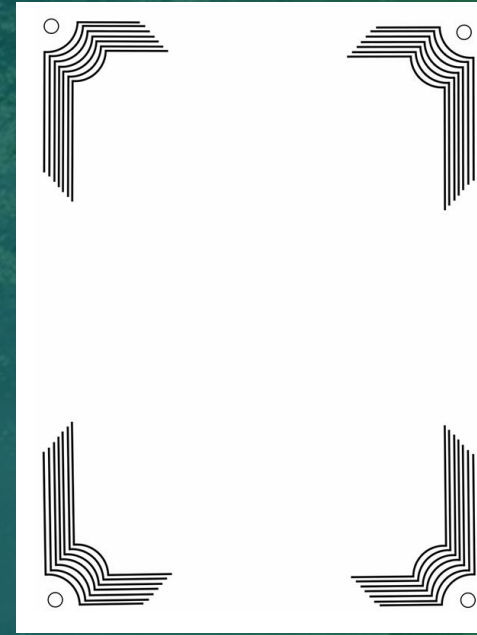
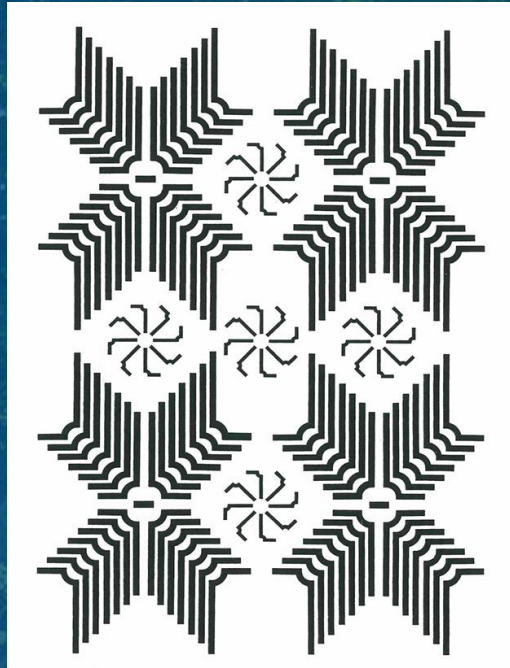
Mirrors – You can go around the outside edge of the mirror with your colored sticker (or jewel) measuring the SF until you get a good spin. You can place it on the outside edge where it won't be seen. You can also use several different colors to see if you can build more of the frequency around the mirror. This will create the frequency over the surface of the mirror which will go out into the room to some extent from light reflecting off the Mirror.



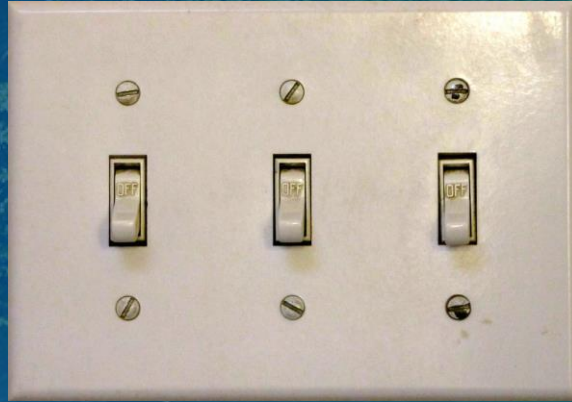
Framed Pictures, Doors, Windows, Bedframes – You can do the same with all of these. This will create a SF emanation from the entire surface of the picture into the room.



We learned
that shape
can
generate
her
frequency...



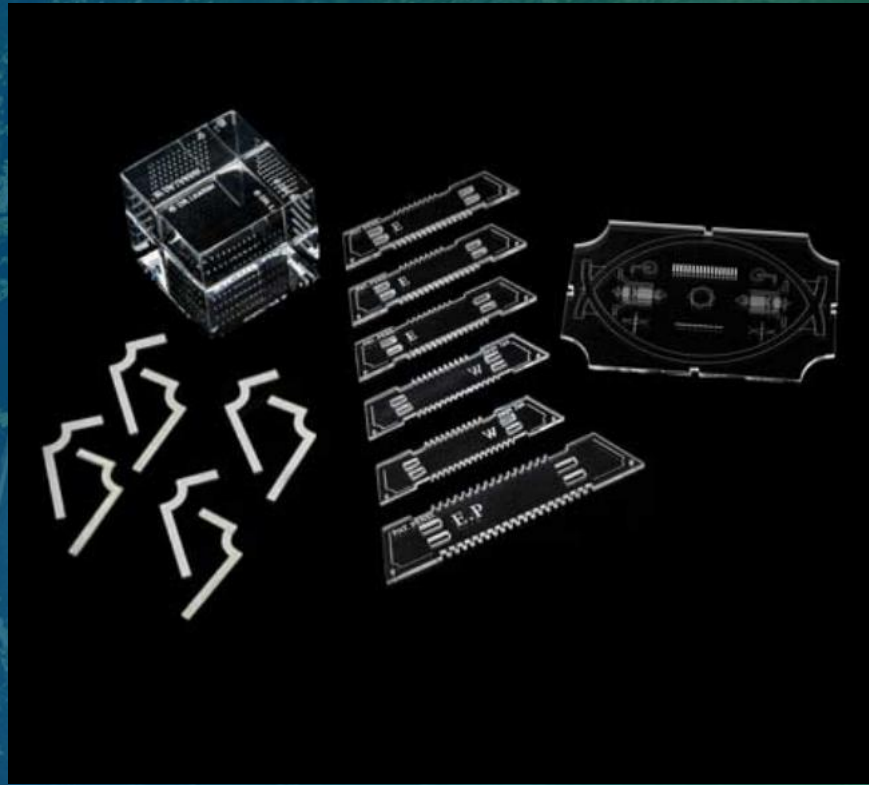
We
learned
our
homes
were very
unsafe...



We learned
that vertical
negative
green and
EMFs can
be hiding
anywhere!



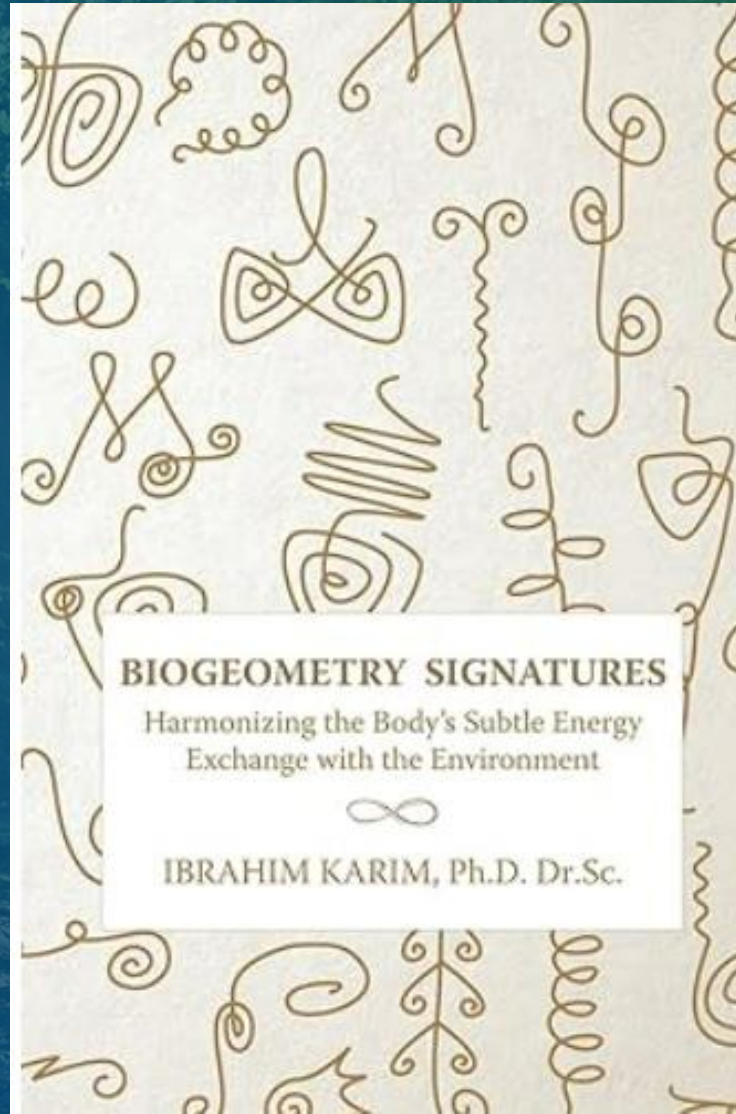
And we learned
there were
remedies...
And that we
could use color
balancing to
remedy these
situations as
well...



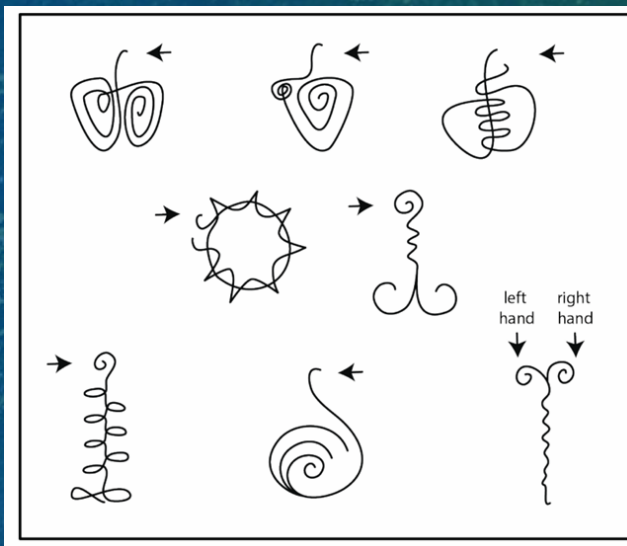
Using Bio-Signatures

How to “Harmonize the Body’s
Subtle Energy Exchange with the
Environment.

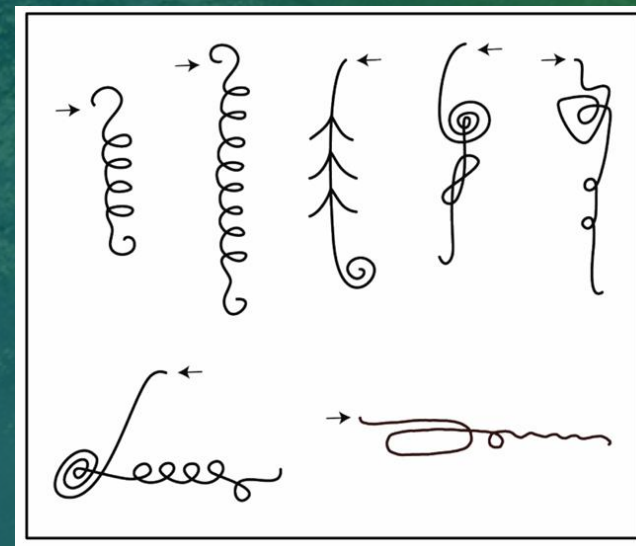
This requires us to become
cognizant that there is one. When
we say, “We are all connected,” we
have to believe and KNOW that we
really and truly **ARE!**”



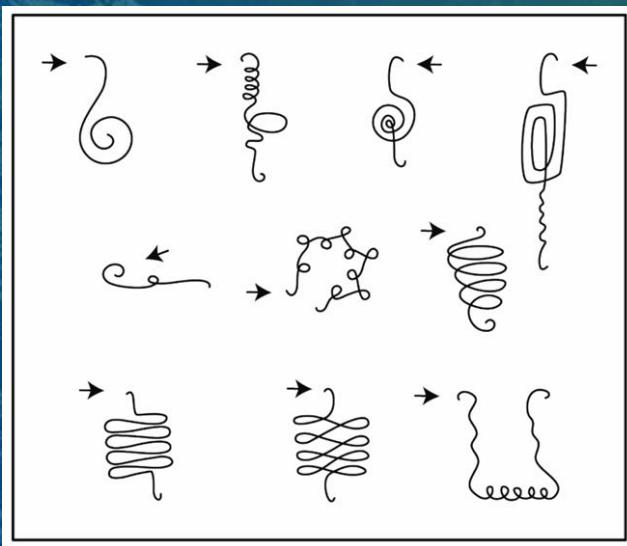
You received some Bio- Signatures



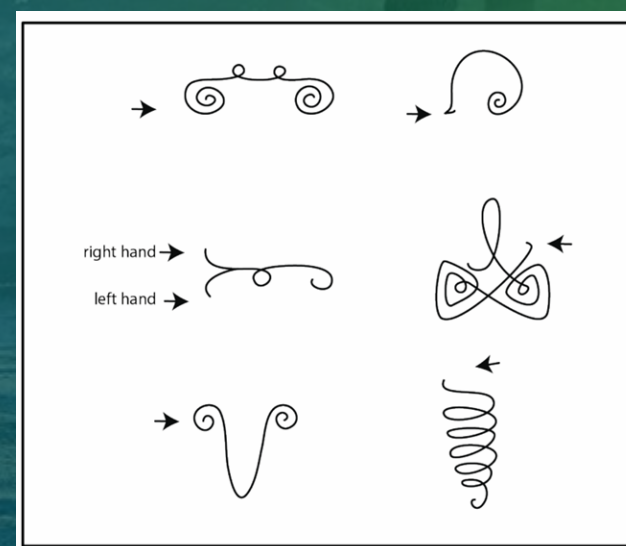
Heart



Spine



Digestive

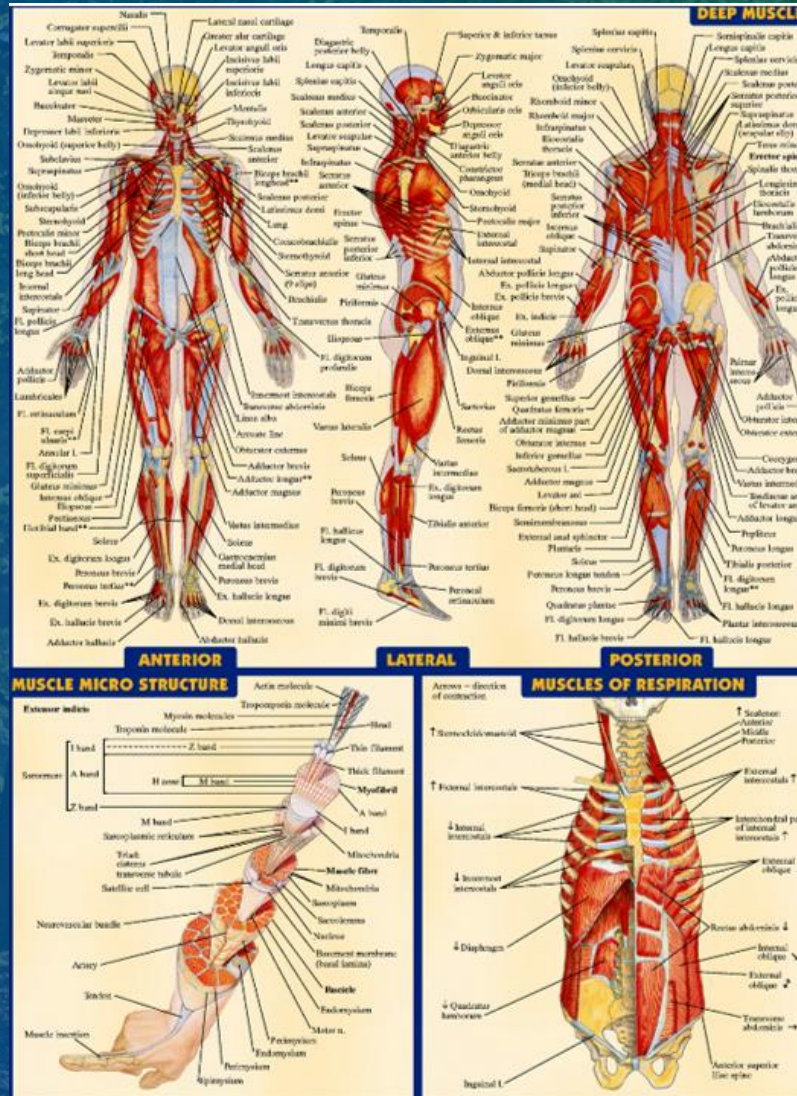


Endocrine

And we
received The
Emergency
Card & The
Clearing
Card

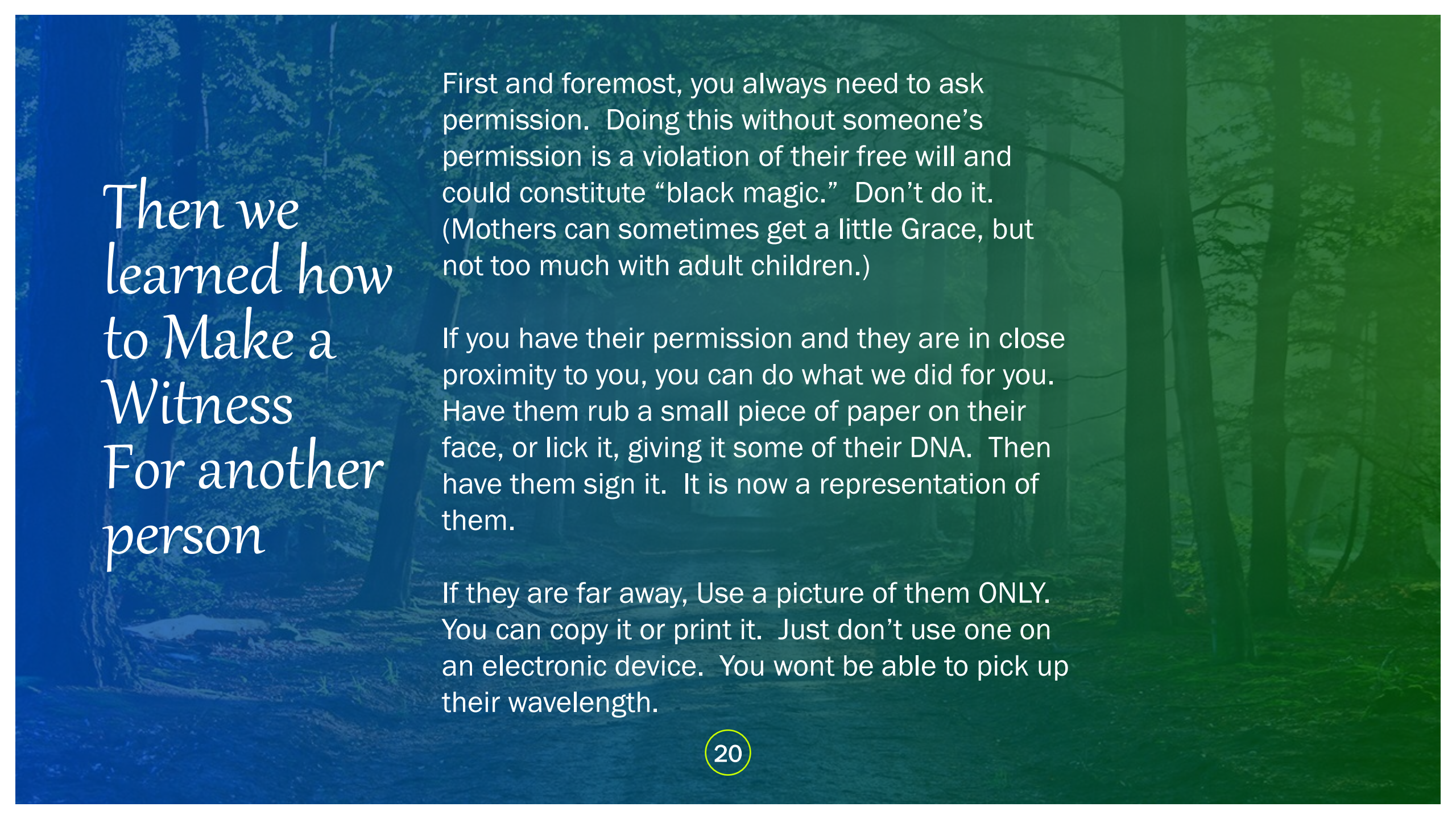


We learned how to test ourselves with Anatomy Charts, make a witness, and then use the biosignatures



Testing Yourself

- First get a baseline with your Neutral Pendulum on yourself.
- Then test your witness for the same spin. You can do that by placing a finger or a pointer on your witness or just testing over the witness. You are doing this to get a baseline.
- Then you will hold your pendulum in your dominant hand and slowly move the pointer over the anatomy chart while focusing your attention on your witness.
- You are looking for fluxuations in the spin. Notice any places that it begins to slow down. Those are places that need adjustments in their energy flow.
- Once you have isolated a spot in need of treatment, look through the energy signatures you have, to see if there is one that might work for that spot.
- Begin testing each of them by tracing them with your eyes while holding the pendulum over the witness and the stick over the place on the anatomy chart, to see if you can get the pendulum to increase in speed.



Then we learned how to Make a Witness For another person

First and foremost, you always need to ask permission. Doing this without someone's permission is a violation of their free will and could constitute "black magic." Don't do it. (Mothers can sometimes get a little Grace, but not too much with adult children.)

If you have their permission and they are in close proximity to you, you can do what we did for you. Have them rub a small piece of paper on their face, or lick it, giving it some of their DNA. Then have them sign it. It is now a representation of them.

If they are far away, Use a picture of them ONLY. You can copy it or print it. Just don't use one on an electronic device. You won't be able to pick up their wavelength.



We learned how to Apply the Signature to the Witness of another person.

You can do this several different ways.
The easiest is to just place the witness on top of a pic of the bio signature.

You can also draw the biosignature on a piece of paper or medical tape and tape it to the witness. This is good especially if you are doing this for several people. You can keep your diagrams free to use on others.

You can also draw it on medical tape and give it to the person to wear.

Leave it in place for a few hours or a day and then test the area again. It should hold a good vibration without the Bio-Signature. If it does, then put your witness in “witness protection” and file it away for another time.

If it doesn't hold, then try another biosignature to see if that helps. Or if it is an area of concern, tell them to seek medical attention.

We learned more ways to generate the Sophia Frequency in Architecture..

We primarily use the Gateway method in outdoor applications, but it can also be incorporated into doorways in buildings and other designs.

You will always want to have a top lintel or overhang on either side as the width of it will directly determine how much Sophia Frequency is emitted.

When you are planning, you can actually direct the frequency where you want it to go.

With what you know about shape and number you can enhance it even more.



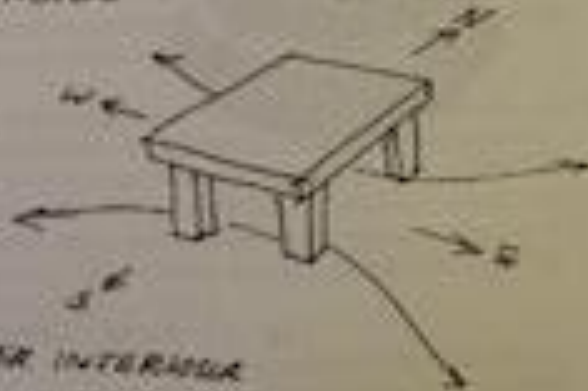
THE USE OF THE 'ARK' OR 'DOLMEN' IN ARCHITECTURE

- EMERGING ENTRANCE
Many different shapes
according to style and period
- Garden gates
- Pagoda Arks on walkways
- Monuments



THE ARK EFFECT INSIDE THE HOUSE

- Tables, chairs etc...
- Chimneys
- Niches



FURNITURE AND OTHER INTERIOR ELEMENTS CAN BE ADJUSTED AND ORIENTED TO THE E-W AXIS TO PRODUCE THE ARK EFFECT.

45 DEGREE EMITTER

The 45 Degree Emitter is a basic pattern used in BioGeometry, discovered by Dr. Karim.

- This method has two basic structural components:
 - 1) A straight line as a base.
 - 2) Two shorter lines connected to the ends of the base line at 45 degree angles.



- This pattern is primarily used on a horizontal plane. On a horizontal plane, it works at any geographic orientation; however you can experiment with turning it through multiple geographic orientations and you will find one or more which intensifies the amount of BGJ created by the emitter.

- The BGJ is created between the two arms of the emitter, as if they were "holding" the BGJ in their arms.

- The basic design will even work two-dimensionally drawn on paper (a "paper emitter") or in three dimensions. In three dimensions, 3 cm tends to be the minimum height for optimal BGJ from the pattern. In two dimensions, it is common to use 7 of the 45 degree emitter lines in a series, to make the energy stronger (see the section in the book on the Quality of Number.)

- This pattern can be used either in outdoor or indoor applications.



An Example...



The Results...



Going forward...

- Remember every time we measure for the Sophia Frequency, we build it in our house and our bodies! So measure daily!
- Practice, practice, practice
- Keep doing your body scans once a week
- Make any adjustments necessary
- Practice drawing the symbols
- Make several copies of the Emergency Card and the Clearing Card and laminate them
- Use them to clear yourself, rooms and objects.



Remember, the
more we practice
doing this, the
more we increase
our own vibration
with the Sophia
Frequency!

By doing this gradually, and allowing
acclimation time, you can avoid
transformational upheaval.



Dance and Integrate



CLOSE SACRED SPACE

