

The background of the slide is a composite image. The top half shows a dark night sky filled with numerous stars. A vibrant aurora borealis (northern lights) is visible, displaying streaks of green and yellow light against the dark sky. The bottom half of the image shows a dark, rocky, and snow-covered landscape under the starry sky. A large, semi-circular teal overlay covers the bottom portion of the image, containing the title and subtitle text.

Source Light School – Module 6a

With Kathy Forest

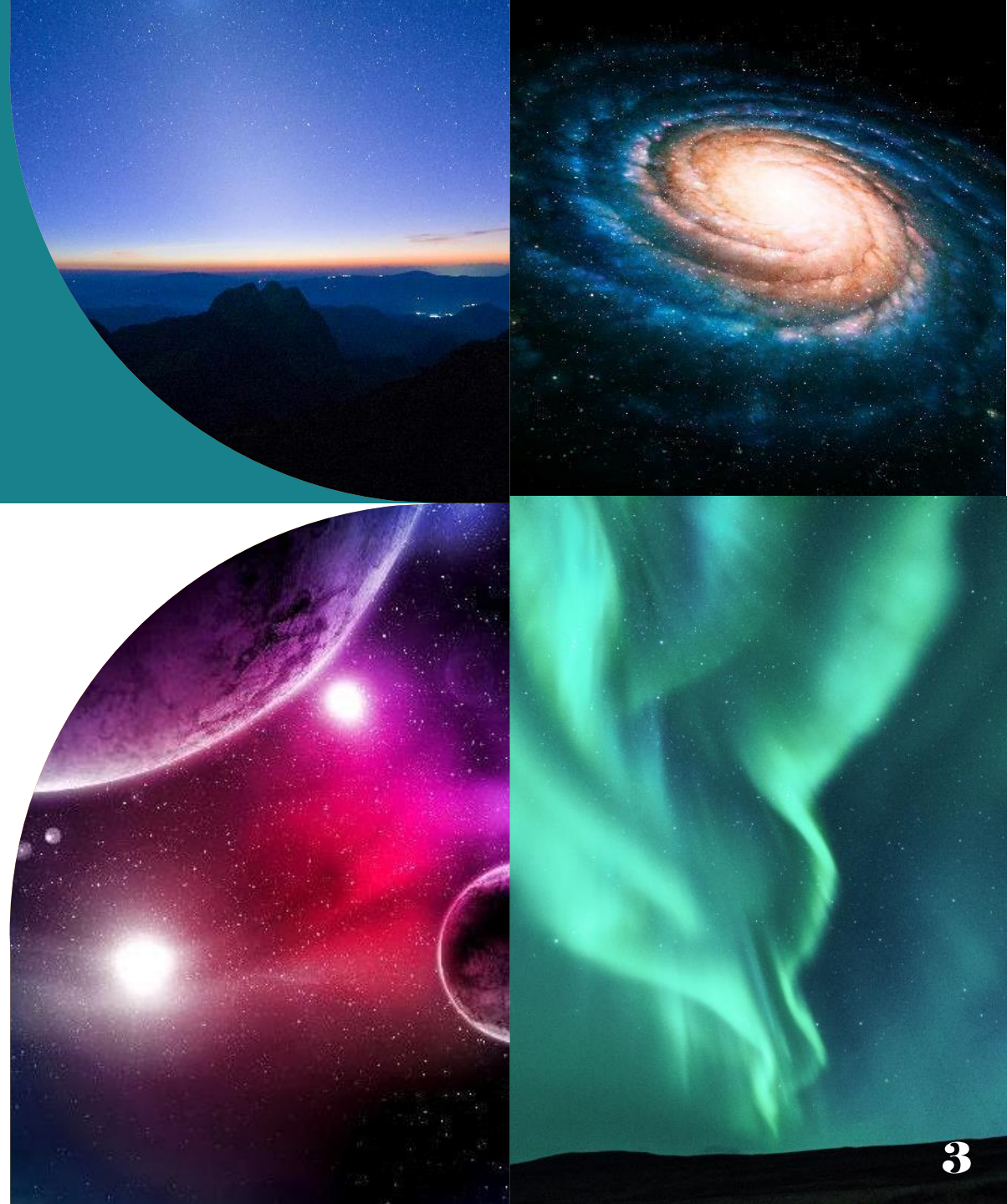
Calling In Sacred Space...

Open to receive...



Agenda

- CHECK-IN
- REVIEW
- LEARNING ABOUT THE 6TH DIMENSION
- NEW TOOLS
- RESOURCES



Check-In

- EXPERIENCES & QUESTIONS



My Goal today is to...

Help You Stay Connected to Your Soul...
Review the First, Second, Third, Fourth, &
Fifth Dimensions

Dive into the 6th Dimension.

Continue to help you re-build your energy
body (Your own personal Indra's Net) so it is
functional and does what it is supposed to
do...Give you a direct line to Source!

Meditation today: Entering the 6th Dimension

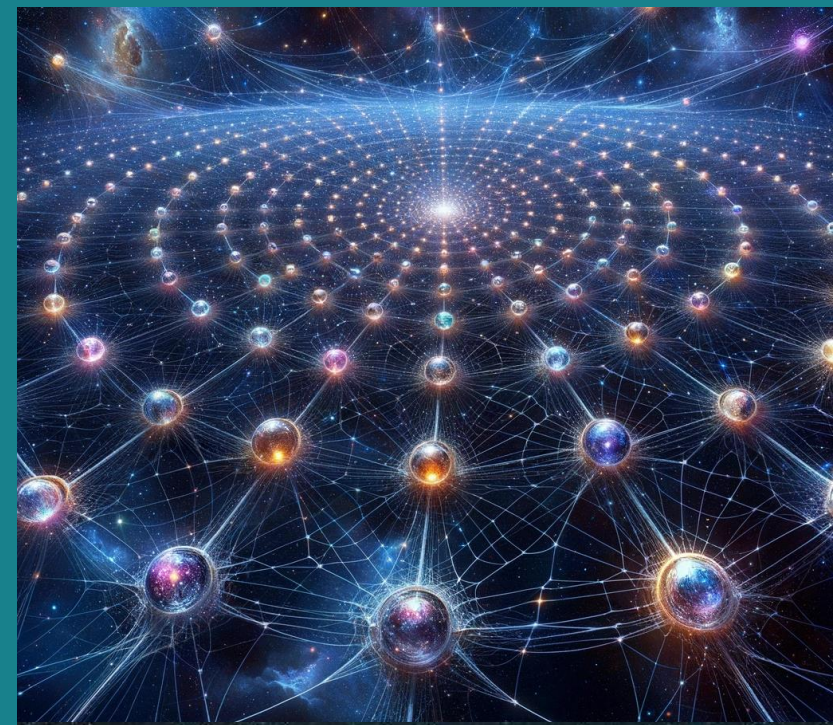
First...we remember

THE MOST SACRED, THE MOST PRECIOUS OF ALL OUR DIMENSIONS ARE OUR...

- 1ST DIMENSION, OUR SOUL, located in our heart; and
- 2nd DIMENSION, The Protective Membrane that surrounds us and our electromagnetic field, and gives us access to SOURCE ENERGY AND WISDOM, AND all the other beings out there...at all times...period.

THEY ARE STRATEGIC IN EMPOWERING OURSELVES TO TAKE CHARGE OF THE UPLEVELING OF OURSELVES AND THIS PLANET.

- Our 3rd DIMENSION, our physical body and world is the playground in which we get to experience all these, and the place where we can actually do our work in the physical and see a physical outcome.
- Our 4th DIMENSION contains all the extra fun tools we can use to make our experience of the 3rd more enjoyable.
- Our 5th DIMENSION is the realm of ALL possibilities...tread carefully!



The Gifts of these Dimensions...

- *1st DIMENSION – Endless Prana*
- *2nd DIMENSION – Connection and Equanimity* – which means we are not ALONE, and we are TOTALLY ACCEPTED
- *3rd DIMENSION – Physical Experience*
- *4th DIMENSION – The Power to Create Reality*
- *In order to move forward, we need to be solid in at least the first 3 and practiced in 4.*
- *5th DIMENSION– The power to choose... any possibility*



The 6th Dimension ~ The Hall of Archetypes

This is actually one of the fun dimensions, and one, interestingly enough, that we have been accessing probably most of our lives.

Any time you pray, meditate, or reach out to communicate with any spiritual being of the past, *you are connecting with the 6th Dimension.*

Just like the 5th Dimension is the place where you can access any possibility – literally any of them...the 6th Dimension is a place where you can access all the Archetypes of any being or concept. These 2 dimensions are probably the most complex we will encounter.

We can define an archetype as a primordial image, symbol or pattern that appears to be universal. It can be a concept, a role, or even a person.



So...

- All the element archetypes, the astrological archetypes, the concept archetypes all live here.
- But so do all the “personality” archetypes: all the gods and goddesses, Jesus, Buddha, Isis, Lao Tso, Hathor, Parvati, Sekhmet, Merlin...all of them.
- Every person you can think of...including you! Robin Williams, Tina Turner, John Lennon, Hitler....
- Every idea, concept, or ideology... communism, democracy, sacred geometry, math, science, art...
- Every physical system: plants, bodies of water, dirt...
- You may be wondering, “How is this different from the 5th Dimension?” The 5th is every single possibility whether it is ever chosen or not. The 6th is more like concepts, *patterns*, ideas, constructs, and actual people. It is more fleshed out and you can learn from it.



IN ORDER TO UNDERSTAND
THIS, WE NEED TO GO BACK
TO WHAT WE KNOW ABOUT
SACRED GEOMETRY AND
HOW IT FORMS EVERYTHING
IN EXISTENCE...

Every Soul, Every I-Am Presence, is a
cymatic frequency, a sound vibration,
that creates the FORM or pattern of that
individual! It elicits a fractal field in all the
dimensions and the materium to create
repeat patterns that literally *form* the
physical body. It also imprints that
frequency pattern out to the universe.
So it doesn't just stop. It continues to
grow.



So, in the 6th Dimension you experience the FULLNESS of the Archetypal Being

If you want to experience the pattern of the Christ being: Yeshua or Jesus, you don't just experience your version of Him or what you have been taught about him, or even just the historical being that we know about. You experience the FULLNESS of HIS SOUL now, with any growth experiences, other incarnations, all of it. Same with any of these iconic beings that we connect with Spiritually, Isis, Kwan Yin, Buddha, Mohammed, Sekhmet, Shiva, Shakti, Lakshmi, anyone you can think of...

You don't just get the tiny little piece you know about, you get (have access to) all of them, their bigger selves as they have continued to grow, develop and evolve over time.

Many of them have not just incarnated here but on other planets, as well. They have also had other incarnations you may not know about. You get the benefit of all of that as well.



So, you may be wondering...

Why has this dimension been so much more accessible to us when most of the rest of them were not?

The answer to this lies in our electromagnetic field.

You may remember that our electromagnetic field lives in the third dimension and is connected to our physical existence.

It has the uncanny ability to connect with and track with PATTERNS. That is part of the process that makes it function and helps it keep us healthy.

Those of us that do this work, most likely have paid attention to this field via our chakras and other energy healing modalities and so our electromagnetic field is pretty healthy.



And even if we haven't paid attention to this system much, its job is to identify patterns. It is just what it does.

So even without access to our 1st or 2nd dimensions, we humans were able to access our 6th Dimension by just going through the door of the 4th (probably without knowing it) and go directly to the archetypal pattern of "Masculine Unconditional Love" that we find in Jesus, or "Divine Feminine Strength" that we find in Isis, or "Pure Compassion" that we find in Kwan Yin.

We can do it very simply. It's how we are able to access information from our "Priestess Selves" which is also an archetype, or any of the gods or goddesses we learn about.



And now that you know, you can use this place, that is housed within your own dimensional self to gain access to information about anything from anyone you can think of.

Think about the possibilities...

Pocahontas, Crazy Horse, Sitting Bull...Solomon, King Arthur, Mary Magdalene, Shakespeare... the possibilities are endless!

What really happened on the Titanic?

Anyone, anything, any event in history, any place or time you can think of, there is an archetype file that you can access through your 6th Dimension.

The 6th Dimension is like your personal library of every concept you would ever want to learn about, or any avatar you would like to experience. In fact, you have probably been accessing it to a certain degree already.

What may be different for you now, is that there is more. And you need to remember that these are frequencies, patterns, NOT THE PEOPLE, NOT THE PHYSICAL FORM THAT YOU MAY IMAGINE.

Humans like to have an experience with folks. We like to “dress our angels up in clothes and make them look like someone we’d like to hang with.” That won’t necessarily happen.

And although it is fine to go explore a little bit. It is still important to follow the steps just like in the 5th Dimension, have a plan of what or who you want to connect with and why, and don’t stay too long. This is a different vibration than your physical body is used to so you still don’t want to overdo it.



Other tools that can help...

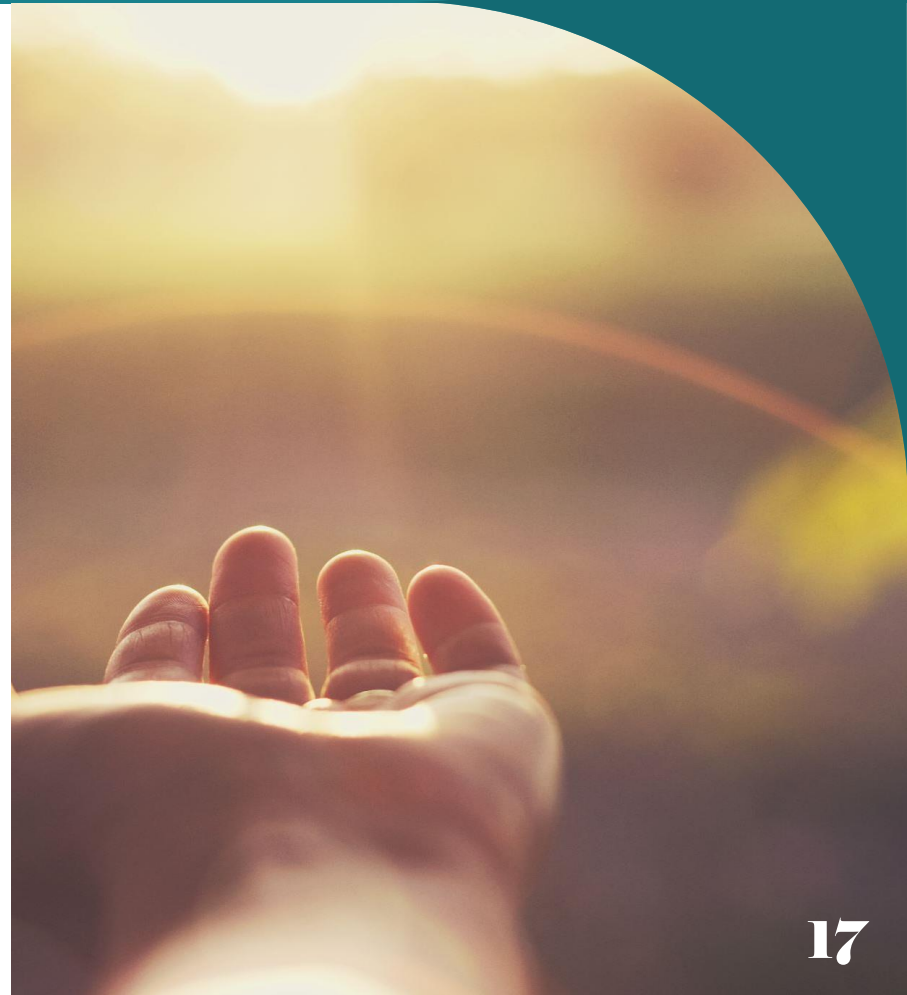
- ANY TOOL THAT HELPS YOU MOVE ENERGY IN YOUR BODY AND ACTIVATE AND ENERGIZE YOUR ELECTROMAGNETIC FIELD..
- SO, YOGA, TAI-CHI, CHI GONG.
- ENERGY WORK, CHAKRA WORK.
- IF YOU AREN'T ALREADY DOING THESE, START. IF YOU ARE, START PAYING ATTENTION TO YOUR BODY AND YOUR ENERGY FIELD AND HOW MUCH YOU ARE HOLDING. ESPECIALLY CHI GONG CAN HELP YOU MOVE AND HOLD ENERGY, SO YOU HAVE PLENTY TO DO THIS WORK.



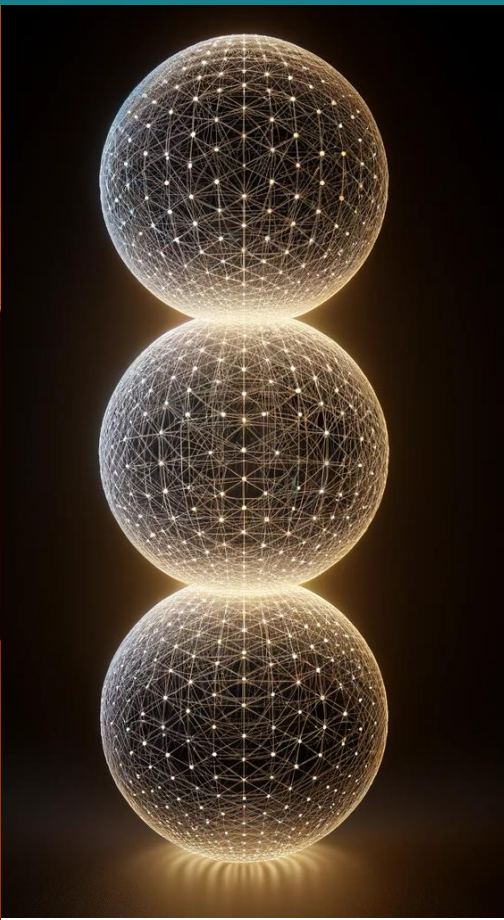
Stay with your practices...

CONNECT TO YOUR SOUL & SOURCE LIGHT ENERGY FIELD DAILY

- Read the Protocol at the beginning of your day.
- Do the clearing meditation including the body activations as often as you can, as you need to
- Do the “Building the Light Body” meditation that we did last time to anchor it in, daily for awhile.
- Keep talking to your Soul
- Record your dreams and work with them!
- IMAGINE the world you want to see, daily!
- Tiptoe into the 5th Dimension and see what you can discover.
- Clear trauma.
- Clear your subconscious.
- BODY WORK – YOGA, CHI GONG, TAI CHI, ENERGY WORK, STRENGTHEN YOUR ELECTROMAGNETIC FIELD!
- Stay Grounded

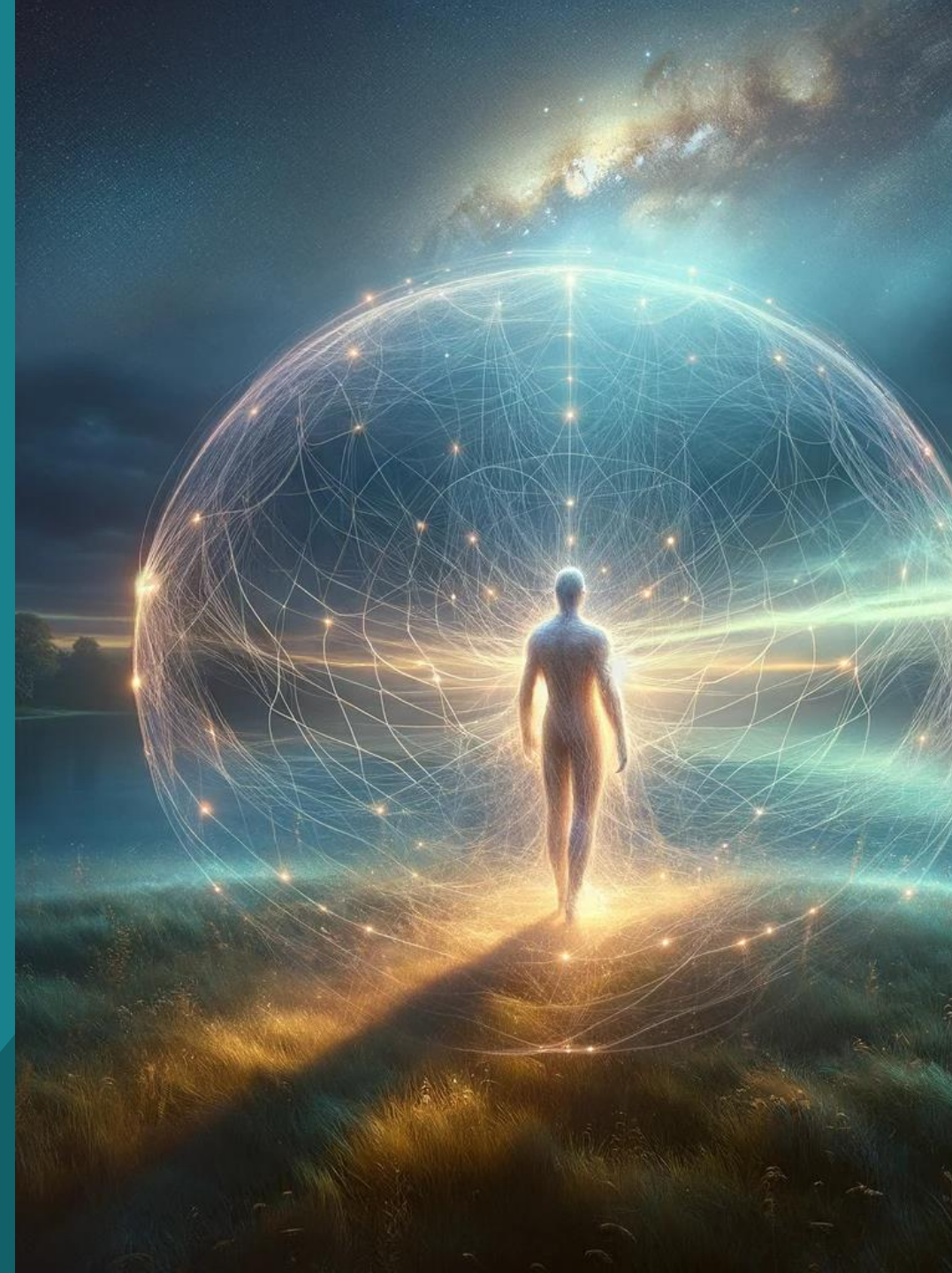


**Today we will follow our
same format...**



TODAY...

- I am just going to take you on a light meditation, showing you how to access the 6th dimension using the tools that we have learned. Take a moment to figure out what you would like to explore.





Next time **IN SOURCE LIGHT SCHOOL...**

- More about the 6th Dimension – the Realm of the Archetypes!
- More exciting toys to play with!

Dance-



Close Sacred Space

NEXT CLASS:
JUNE 20, 2024